



Excellence Beyond Expectation



[www.sonartire.com](http://www.sonartire.com)



Randall Street Monrovia, Liberia | Telephone: +231886745333 / +231776500000  
Email: [info@autoking.co](mailto:info@autoking.co) | Website: [www.autoking.co](http://www.autoking.co)



# BRAND STORY

## SONAR TIRE, the late starter who wins

The one who arrives first at the finishing line and wins the trophy does not necessarily have to be the one who starts first in the race. It is often the one who catches up from behind to lead the race that deserves to win the legendary title of the champion.

In 1996, a late starter yet full of confidence, SONAR joined the tire manufacturing race. Since inception, it has created many brilliant sales records, e.g. 37000 tires in 1996, a million in 2006 and 1.1 million in 2010. With its solid product strength, SONAR proudly sits on the top of every best selling list.

SONAR's unique innovativeness not only exists in its product design and quality which bring safety and pleasure to the driver, but also in its business practice of spontaneously responding to market demands and focusing on the creation of high quality products. To provide consumers with what is beyond their expectation is the brand's philosophy and ultimate goal of SONAR TIRE. That is why SONAR strives to become the leader in this race. This little miracle in the field of tire manufacturing is backed up by SONAR's confidence in its extraordinary product quality and its earnest promise to its customers.

## Brand Logo SONAR soars high and free

The creation of the brand logo comes from a free outline of the shape of a pair of high flying wings, extending speedily towards the horizon. It depicts the carefree character of driving through a vast and natural landscape, and the pleasure and freedom offlying high in the sky with no limits. The letter "S" looks solid and stable but it is extended with the dynamics of a wing. This represents the adventurous and pioneering spirit of the brand in its continuous course of advancement and releases an air of pride and confidence of the brand's super-"sonic" capabilities.

# INDEX

## PCR

### SPORTEK

SX-2 ..... 04

SX-1 EVO ..... 06

### PRIMAX

SX-608 ..... 08

S-780 ..... 10

## SUV

### CONQUEROR

N-890 ..... 11

SX-9 ..... 12

SX-8 ..... 14

SX-7 ..... 16

## LTR & COMMERCIAL

### DURATEK

S-888 ..... 20

N-820 ..... 22

S-866 ..... 23

## WINTER

### POWDERHOUND

SA-700 ..... 24

PF-3D ..... 26

PF-2 ..... 28

PF-5 ..... 30

P-800 ..... 31

## 4X4

### CONQUEROR

S-860 ..... 18

S-830 ..... 19

N-850 ..... 19

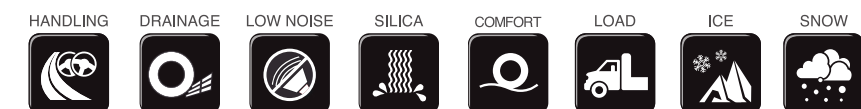
## Inch Up Fitments

Sidewall Descriptions ..... 32

Safety ..... 33

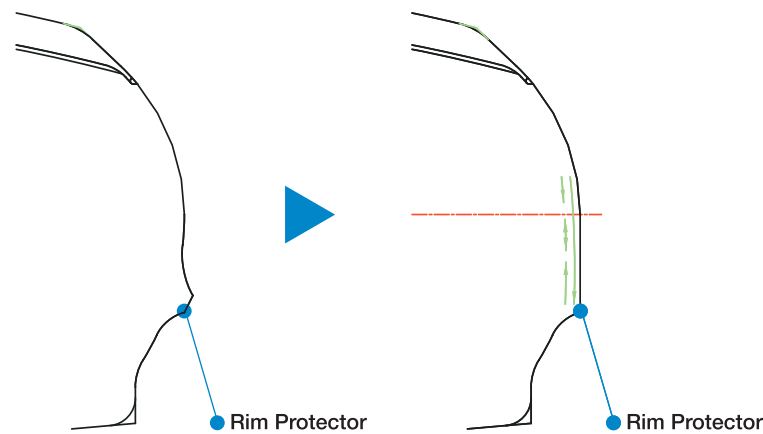
Inch Up Fitments ..... 34

## PICTOGRAM



# TIRE TECHNOLOGY

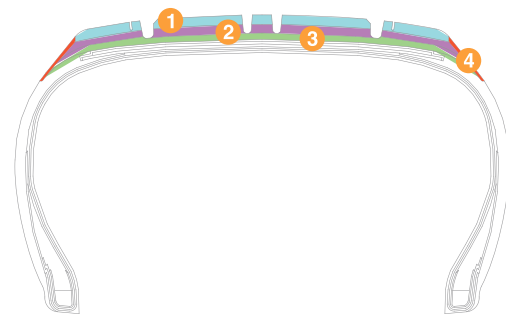
## Rim Protector



The new rim protector not only protects the rim, but also enhances sidewall stiffness and promotes maneuverability.

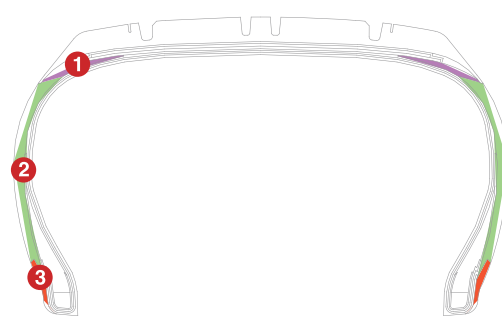
## Quadri-compound Tread

- 1 Provides handling and comfort.
- 2 Underpins driving comfort.
- 3 Protects the inner tyre from heat generation.
- 4 Prevents chapping caused by lateral movement.



## Tri-compound Side

- 1 Provides good shock absorption.
- 2 Prevents deformation of the tyre casing.
- 3 Prevents friction between the rim and the tyre.



## Bead Wire Spiral Winding Technology

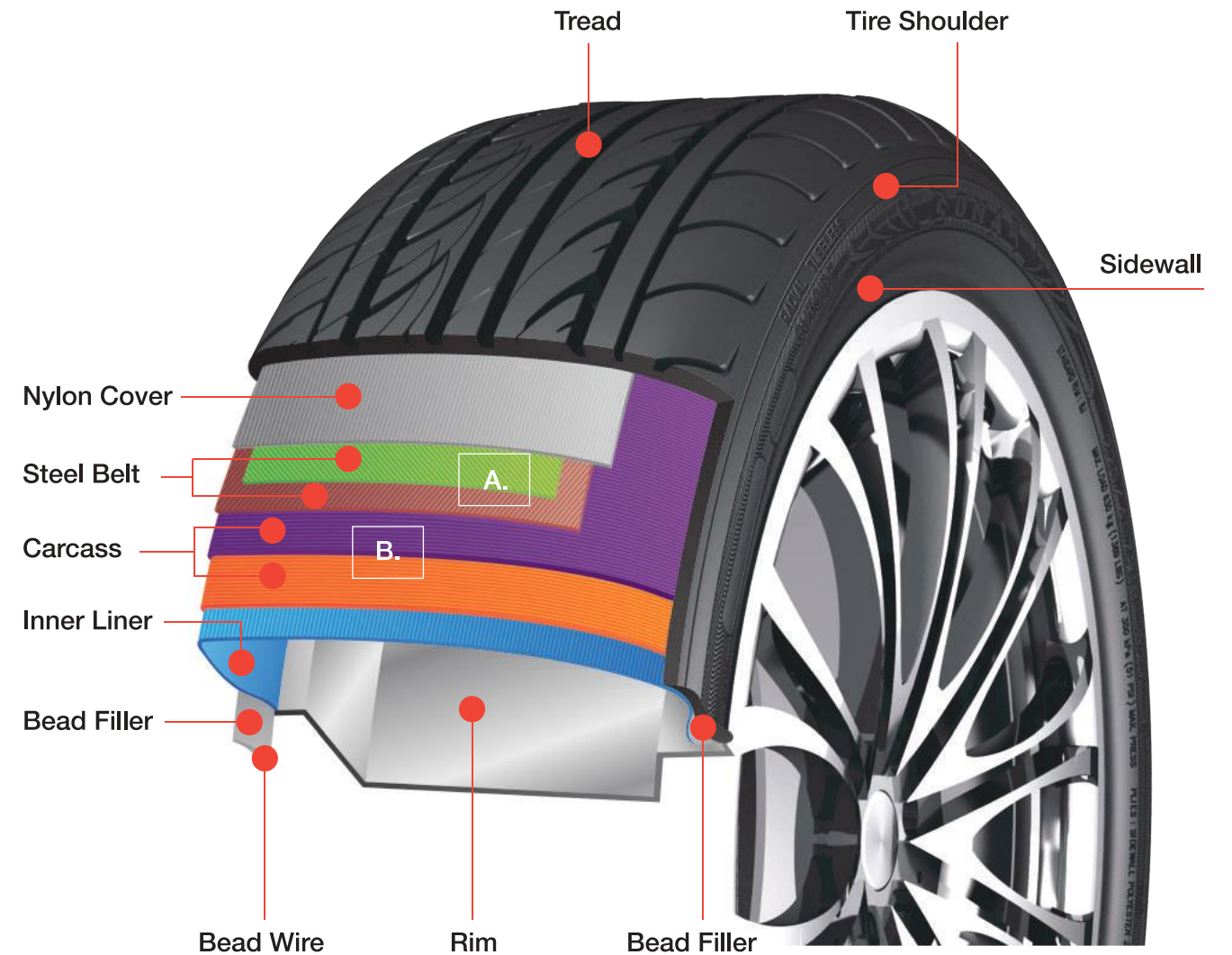
Jointless Bead Wire Spiral Winding machine is also called JLB. Bead wire is wound by a single wire. This new technology can reduce car shake and vibration from tires.

## Jointless Spiral Winding Technology

Jointless Nylon Cover is different from conventional tire construction, a continuous banding of nylon cord is wound around the circumference of the tire over steel belts to eliminate the overlap joint splice. This new technology can improve uniformity at high speeds.



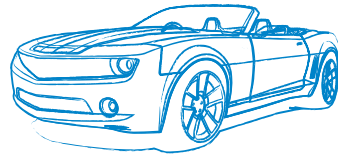
# TIRE STRUCTURE



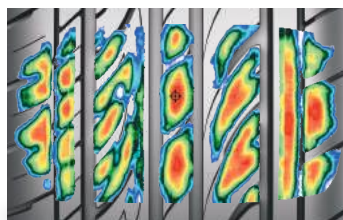
- A.** Steel belted tires:
- 1. Help the tire to be used longer miles, and harder to damage.
  - 2. It spreads the load over a greater surface
  - 3. Help to keep the tire cooler for reducing the risk the rubber breaks down.
- B.** Radial tires: a 90-degree angle to the tire; and the belts overlap rather than cross each other. Radial construction allows the tire's sidewall to flex under loads without affecting the contact of the tread with the road:
- 1. Higher speed capacity
  - 2. Longer lasting and Longer tread life (Up to 30%- 50% longer)
  - 3. Larger contact area wider footprint
  - 4. Better stability
  - 5. Smoother, more quiet drive



# SX-2



Contact Patch



**1** Asymmetric Pattern Design: the inside stresses on comfort and quietness; and the outside emphasizes on maneuverability. Four broad circumferential grooves enhance drainage efficiency and upgrade handling performance on wet roads.

**2** The sub-straight grooves on the shoulders assist drainage efficiency and prevent irregular tread wear.

**3** Sipes on the inside shoulder reduce block rigidity, moderate road noise and enhance driving comfort.

Pattern Features



**4** The thin lateral grooves curb the noise generation to moderate pattern noise. The outside Kerf-less macro blocks upgrade stiffness and tire maneuverability.

**5** Sipes on the center rib reduce block rigidity to enhance driving comfort.

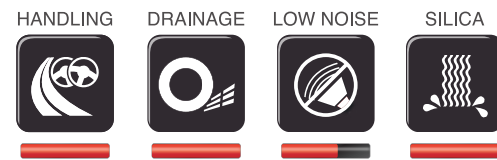
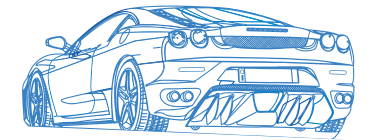
**6** 5-pitch design and computer simulation eliminate noise generation effectively.

Series	Inch	Size	Load Index	Speed Index	Rim Width (Inch)	OD (mm)	SW (mm)	RRC	Wet Grip	Noise Value (dB)	Noise Class
30'	20	285/30ZR20	99(XL)	Y	10	680	290	E	B	73	2
30'	20	245/30ZR20	95(XL)	Y	8.5	656	248	E	B	72	2
30'	20	225/30ZR20	85(XL)	Y	8	644	230	E	B	72	2
30'	19	275/30ZR19	96(XL)	Y	9.5	649	278	E	B	73	2
30'	19	265/30ZR19	93(XL)	Y	9.5	643	271	E	B	72	2
35'	20	255/35ZR20	97(XL)	Y	9	686	260	E	B	73	2
35'	20	245/35ZR20	95(XL)	Y	8.5	680	248	E	B	72	2
35'	20	225/35ZR20	93(XL)	Y	8	666	230	E	B	72	2
35'	19	255/35ZR19	96(XL)	Y	9	661	260	E	B	73	2
35'	19	245/35ZR19	95(XL)	Y	8.5	655	248	E	B	72	2
35'	19	235/35ZR19	91(XL)	Y	8.5	647	241	E	B	71	2
35'	18	265/35ZR18	97(XL)	W	9.5	643	271	E	B	72	2
35'	18	265/35R18	97(XL)	H	9.5	643	271	E	B	72	2
35'	18	255/35ZR18	94(XL)	W	9	635	260	E	B	72	2
35'	18	255/35R18	94(XL)	H	9	635	260	E	B	72	2
35'	18	225/35ZR18	87(XL)	W	8	615	230	E	B	72	2
35'	18	215/35ZR18	84(XL)	W	7.5	607	218	E	B	72	2
40'	20	245/40ZR20	99(XL)	Y	8.5	704	248	E	B	72	2
40'	19	275/40ZR19	101	Y	9.5	703	278	E	B	72	2
40'	19	245/40ZR19	98(XL)	Y	8.5	679	248	E	B	72	2
40'	19	225/40ZR19	93(XL)	Y	8	663	230	E	B	72	2
40'	18	245/40ZR18	97(XL)	W	8.5	653	248	E	B	72	2
40'	18	245/40R18	97(XL)	H	8.5	653	248	E	B	72	2
40'	18	235/40ZR18	95(XL)	W	8.5	645	241	E	B	72	2
40'	18	235/40R18	95(XL)	V	8.5	645	241	E	B	72	2
40'	18	225/45ZR18	95	W	7.5	659	225			N/A	
40'	18	225/40ZR18	92(XL)	Y	8	637	230	E	B	72	2
40'	18	215/40R18	89(XL)	H	7.5	629	218	E	B	72	2
40'	17	245/40R17	91	V	8.5	628	248	E	B	71	2
40'	17	215/40R17	87(XL)	V	7.5	604	218	E	B	72	2
40'	17	205/40ZR17	84(XL)	Y	7.5	596	212	E	B	72	2
40'	17	205/40R17	84(XL)	V	7.5	596	212	E	B	72	2
40'	17	195/40R17	81(XL)	H	7	588	200	E	B	72	2
40'	17	165/40R17	75(XL)	V	6	564	170			N/A	
45'	20	245/45ZR20	99	Y	8	728	243	E	B	71	2
45'	19	245/45ZR19	98	Y	8	703	243	E	B	71	2
45'	18	245/45ZR18	100(XL)	W	8	677	243	E	B	71	2
45'	18	245/45R18	100(XL)	H	8	677	243	E	B	71	2
45'	18	215/45R18	93(XL)	H	7	651	213	E	B	71	2
45'	17	235/45R17	97(XL)	V	8	644	236	E	B	72	2
45'	17	225/45ZR17	94(XL)	Y	7.5	634	225	E	B	72	2
45'	17	225/45R17	94(XL)	V	7.5	634	225	E	B	72	2
45'	17	215/45ZR17	91	W	7	626	213			N/A	
45'	17	215/45R17	91(XL)	H	7	626	213	E	B	71	2
45'	17	205/45R17	88(XL)	V	7	616	206			N/A	
45'	17	195/45R17	85(XL)	H	6.5	608	195			N/A	
45'	16	215/45R16	90(XL)	V	7	600	213	E	B	72	2
45'	16	205/45R16	87(XL)	V	7	590	206	E	B	72	2
45'	16	195/45R16	84(XL)	V	6.5	582	195	E	B	72	2
45'	16	165/45R16	74(XL)	V	5.5	554	165			N/A	
50'	18	235/50ZR18	101(XL)	W	7.5	693	245			N/A	
50'	18	235/50R18	97	H	7.5	693	245	E	B	71	2
50'	18	225/50ZR18	95	W	7	683	233	E	B	71	2
50'	17	225/50ZR17	98(XL)	Y	7	658	233	E	B	72	2
50'	17	215/50R17	95(XL)	V	7	648	226			N/A	
50'	17	215/50R17	91	V	7	648	226			N/A	
50'	17	205/50ZR17	93(XL)	Y	6.5	638	214	E	B	72	2
50'	17	205/50R17	93(XL)	V	6.5	638	214	E	B	72	2
50'	16	245/50R16	97	V	7.5	652	253	E	B	71	2
50'	16	225/50R16	92	V	7	632	233	E	B	71	2
50'	16	205/50R16	87	V	6.5	612	214	E	B	71	2
50'	16	195/50R16	84	V	6	602	201	E	B	71	2
50'	16	165/50R16	75	V	5	572	170			N/A	
55'	18	225/55R18	98	H	7	705	233	E	B	71	2
55'	17	225/55ZR17	101(XL)	W	7	680	233	E	B	72	2
55'	17	205/55R17	91	V	6.5	658	214	E	B	71	2
55'	16	225/55ZR16	99(XL)	W	7	654	233	E	B	72	2
55'	16	225/55R16	99(XL)	V	7	654	233	E	B	72	2
55'	16	215/55ZR16	97(XL)	W	7	642	226	E	B	72	2
55'	16	205/55ZR16	94(XL)	W	6.5	632	214	E	B	72	2
55'	16	205/55R16	94(XL)	V	6.5	632	214	E	B	72	2
55'	16	195/55R16	91(XL)	V	6	620	201	E	B	72	2
55'	16	185/55R16	83	V	6	610	194			N/A	
55'	15	165/55R15	75	V	5	563	170	F	B	70	2
60'	17	215/60R17	96	H	6.5	690	221	E	B	71	2
60'	14	205/60R14	92(XL)	H	6	602	209	E	B	71	2
60'	14	165/60R14	75	H	5	554	170	F	B	70	2
60'	13	205/60R13	86	H	6	576	209			N/A	
60'	13	185/60R13	80	H	5.5	552	189			N/A	
60'	13	175/60R13	77	H	5	540	177	F	B	70	2



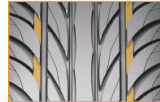

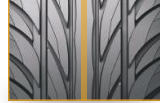



# SX-1EVO

## SX-1EVO size list



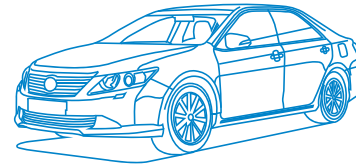
### Pattern Features



- 1  Die-Bar:  
Lower the noise generated by air consonance.
- 2  High-Bevel:  
Enhance block rigidity and performance.
- 3  S-Type Central Rib:  
Enhance block rigidity and performance.
- 4  High-Angle Lateral Groove:  
Increase drainage capabilities.
- 5  Shoulder Sipes:  
Average block rigidity, enhance comfort and reduce road noise.
- 6  Two Broad Straight Grooves:  
Enhance drainage capabilities and ensure driving safety.

Series	Inch	Size	Load Index	Speed Index	Rim Width (Inch)	OD (mm)	SW (mm)	RRC	Wet Grip	Noise Value (dB)	Noise Class
30'	19	265/30ZR19	93(XL)	Y	9.5	643	271	E	C	73	2
30'	19	255/30ZR19	91(XL)	Y	9	637	260	E	C	73	2
35'	19	245/35ZR19	93(XL)	Y	8.5	655	248	E	C	73	3
35'	19	235/35ZR19	91(XL)	Y	8.5	647	241	E	C	73	3
35'	19	225/35ZR19	88(XL)	Y	8	641	230	F	C	73	3
35'	18	265/35ZR18	93	W	9.5	643	271	E	C	73	3
35'	18	265/35R18	93	H	9.5	643	271	E	C	73	3
35'	18	255/35ZR18	94(XL)	W	9	635	260	E	C	73	2
35'	18	215/35R18	84(XL)	H	7.5	607	218	F	C	73	3
35'	17	165/35R17	75(XL)	V	6	548	170	F	C	73	3
40'	18	245/40ZR18	97(XL)	W	8.5	653	248	E	C	73	3
40'	18	245/40R18	97(XL)	H	8.5	653	248	E	C	73	3
40'	18	235/40ZR18	95(XL)	W	8.5	645	241	E	C	73	3
40'	18	235/40R18	95(XL)	H	8.5	645	241	E	C	73	3
40'	18	225/40ZR18	92(XL)	W	8	637	230	E	C	73	3
40'	18	225/40R18	92(XL)	H	8	637	230	E	C	73	3
40'	17	255/40ZR17	94	W	9	636	260	E	C	73	3
40'	17	235/40R17	90	V	8.5	620	241	F	C	73	3
40'	17	205/40R17	84(XL)	V	7.5	596	212	F	C	73	3
45'	18	245/45ZR18	100(XL)	W	8	677	243	E	C	73	3
45'	18	225/45ZR18	91	W	7.5	659	225	E	C	73	3
45'	17	245/45R17	95	V	8	652	243	E	C	73	3
45'	17	245/45R17	95	H	8	652	243	E	C	73	3
45'	17	235/45ZR17	94	W	8	644	236	E	C	73	3
45'	17	235/45R17	94	V	8	644	236	E	C	73	3
45'	17	235/45R17	94	H	8	644	236	E	C	73	3
45'	17	225/45R17	94(XL)	V	7.5	634	225	E	C	73	3
45'	17	225/45R17	94(XL)	H	7.5	634	225		N/A		
45'	17	215/45ZR17	91(XL)	W	7	626	213	E	C	73	3
45'	17	215/45R17	91(XL)	V	7	626	213	E	C	73	3
45'	17	215/45R17	91(XL)	H	7	626	213	E	C	73	3
45'	17	205/45R17	88(XL)	V	7	616	206	F	C	73	3
45'	15	195/45R15	78	V	6.5	557	195	F	C	73	3
50'	18	235/50ZR18	97	W	7.5	693	245	E	C	73	3
50'	17	215/50R17	91	V	7	648	226	E	C	73	3
50'	17	205/50R17	93(XL)	V	6.5	638	214	E	C	73	3
50'	15	195/50R15	86(XL)	V	6	577	201	F	C	73	3
55'	16	215/55R16	93	V	7	642	226	E	C	73	3
55'	16	205/55R16	91	V	6.5	632	214	E	C	73	3
55'	15	205/55R15	88	V	6.5	607	214	F	C	73	3
55'	15	195/55R15	85	V	6	595	201	F	C	73	3
60'	14	205/60R14	92(XL)	H	6	602	209	E	C	73	3
60'	13	205/60R13	86	H	6	576	209	F	C	73	3
60'	13	185/60R13	80	H	5.5	552	189	F	C	73	3

# SX-608



- 1** The broad straight shoulder groove reduces hydroplaning and provides superior wet handling.
- 2** V-shaped sipes and 3-in-1 multiblocks promote quiet driving and reduce noise generation.
- 3** Shoulders with reinforced stiffness block improve traction and handling when cornering.
- 4** Special drainage grooves avoid the occurrence of hydroplaning.

### Pattern Features



Series	Inch	Size	Load Index	Speed Index	Rim Width (Inch)	OD (mm)	SW (mm)	RRC	Wet Grip	Noise Value (dB)	Noise Class
50 <sup>s</sup>	15	225/50R15	91	V	7	607	233	E	C	72	3
50 <sup>s</sup>	15	205/50R15	86	V	6.5	587	214	F	C	71	2
50 <sup>s</sup>	15	195/50R15	82	V	6	577	201	F	C	72	3
50 <sup>s</sup>	15	175/50R15	75	H	5.5	557	182	F	C	70	2
50 <sup>s</sup>	15	165/50R15	72	V	5	547	170	F	C	72	3
50 <sup>s</sup>	14	175/50R14	74	H	5.5	532	182	F	C	72	3
55 <sup>s</sup>	17	215/55R17	94	V	7	668	226	E	C	72	3
55 <sup>s</sup>	16	205/55R16	91	V	6.5	632	214	E	C	70	2
55 <sup>s</sup>	16	205/55R16	94(XL)	V	6.5	632	214		N/A		
55 <sup>s</sup>	15	205/55R15	88	V	6.5	607	214	F	C	72	3
55 <sup>s</sup>	15	195/55R15	85	V	6	595	201	F	C	72	3
55 <sup>s</sup>	15	185/55R15	82	V	6	585	194	F	C	72	3
55 <sup>s</sup>	15	175/55R15	77	H	5.5	573	182	F	C	70	2
55 <sup>s</sup>	14	185/55R14	80	H	6	560	194	F	C	70	2
55 <sup>s</sup>	13	165/55R13	70	H	5	512	170	F	C	70	2
60 <sup>s</sup>	16	235/60ZR16	100	W	7	688	240	E	C	72	3
60 <sup>s</sup>	16	235/60R16	100	V	7	688	240	E	C	72	3
60 <sup>s</sup>	16	225/60R16	98	V	6.5	676	228	E	C	71	2
60 <sup>s</sup>	16	215/60R16	99(XL)	V	6.5	664	221	E	C	72	2
60 <sup>s</sup>	16	205/60R16	96(XL)	V	6	652	209	E	C	72	2
60 <sup>s</sup>	15	225/60R15	96	V	6.5	651	228	E	C	71	2
60 <sup>s</sup>	15	215/60R15	94	V	6.5	639	221	E	C	72	3
60 <sup>s</sup>	15	205/60R15	91	H	6	627	209	E	C	71	2
60 <sup>s</sup>	15	205/60R15	91	V	6	627	209	E	C	71	2
60 <sup>s</sup>	15	195/60R15	88	V	6	615	201	F	C	71	2
60 <sup>s</sup>	15	195/60R15	88	H	6	615	201	F	C	72	3
60 <sup>s</sup>	15	185/60R15	88(XL)	H	5.5	603	189	F	C	72	3
60 <sup>s</sup>	15	175/60R15	81	H	5	591	177	F	C	70	2
60 <sup>s</sup>	14	195/60R14	86	H	6	590	201	F	C	71	2
60 <sup>s</sup>	14	185/60R14	82	H	5.5	578	189	F	C	72	3
60 <sup>s</sup>	14	175/60R14	79	H	5	566	177	F	C	72	3
65 <sup>s</sup>	15	215/65R15	96	H	6.5	661	221	E	C	72	3
65 <sup>s</sup>	15	205/65R15	99(XL)	H	6	647	209	E	C	72	2
65 <sup>s</sup>	15	205/65R15	95	H	6	647	209		N/A		
65 <sup>s</sup>	15	205/65R15	99(XL)	V	6	647	209	E	C	72	2
65 <sup>s</sup>	15	195/65R15	91	V	6	635	201	E	C	72	3
65 <sup>s</sup>	15	195/65R15	91	H	6	635	201	E	C	72	3
65 <sup>s</sup>	15	195/65R15	91(WL)	H	6	635	201	E	C	71	2
65 <sup>s</sup>	15	185/65R15	88	H	5.5	621	189	F	C	72	3
65 <sup>s</sup>	15	175/65R15	88(XL)	H	5	609	177	F	C	70	2
65 <sup>s</sup>	14	195/65R14	89	H	6	610	201	F	C	72	3
65 <sup>s</sup>	14	185/65R14	86	H	5.5	596	189	F	C	72	3
65 <sup>s</sup>	14	175/65R14	82	H	5	584	177	F	C	70	2
65 <sup>s</sup>	14	165/65R14	79	H	5	570	170	F	C	70	2
65 <sup>s</sup>	14	155/65R14	75	H	4.5	558	157	F	C	70	2
65 <sup>s</sup>	14	155/65R14	75	V	4.5	558	157	F	C	72	3
65 <sup>s</sup>	14	155/65R14	75(WR)	H	4.5	558	157	F	C	70	2
65 <sup>s</sup>	13	165/65R13	77	H	5	544	170	F	C	70	2
65 <sup>s</sup>	13	155/65R13	73	T	4.5	532	157	F	C	70	2
70 <sup>s</sup>	14	205/70R14	95	H	6	644	209	E	C	71	2
70 <sup>s</sup>	14	195/70R14	91	H	6	630	201	E	C	71	2
70 <sup>s</sup>	14	185/70R14	88	H	5.5	616	189	F	C	70	2
70 <sup>s</sup>	14	165/70R14	81	H	5	588	170	F	C	70	2
70 <sup>s</sup>	14	155/70R14	77	T	4.5	574	157	F	C	70	2
70 <sup>s</sup>	13	185/70R13	86	H	5.5	590	189	F	C	70	2
70 <sup>s</sup>	13	175/70R13	82	H	5	576	177	F	C	72	3
70 <sup>s</sup>	13	155/70R13	75	T	4.5	548	157	F	C	72	3
70 <sup>s</sup>	12	165/70R12	77	T	5	537	170	F	C	72	3
70 <sup>s</sup>	12	155/70R12	73	T	4.5	523	157	F	C	72	3
80 <sup>s</sup>	15	145/80R15	77	T	4	615	145	F	C	72	3



# S-780



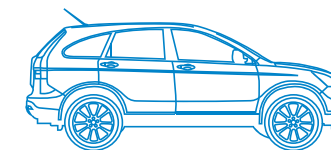
### Pattern Features



- 1 Four circumferential grooves enhance drainage efficiency greatly.
- 2 Sipes at shoulders average block stiffness and reduce road impact from friction for better riding comfort.
- 3 Multi-pitch tread design with computer simulation reduces the generation of noise.

Series	Inch	Size	Load Index	Speed Index	Rim Width (Inch)	OD (mm)	SW (mm)	RRC	Wet Grip	Noise Value (dB)	Noise Class
70'	14	205/70R14	95	H	6	644	209	E	C	70	2
70'	14	195/70R14	91	H	6	630	201	E	C	70	2
70'	14	185/70R14	88	H	5.5	616	189	E	C	70	2
70'	14	175/70R14	84	T	5	602	177	E	C	70	2
70'	13	185/70R13	86	H	5.5	590	189	E	C	70	2
70'	13	175/70R13	82	H	5	576	177	E	C	70	2
70'	13	175/70R13	82	T	5	576	177		N/A		
70'	13	165/70R13	79	T	5	562	170	E	C	70	2
70'	13	155/70R13	75	T	4.5	548	157	F	C	70	2
70'	13	145/70R13	71	T	4.5	534	150	F	C	70	2
80'	15	165/80R15	87	T	4.5	645	165	E	C	70	2
80'	13	165/80R13	83	T	4.5	594	165	E	C	70	2
80'	13	155/80R13	79	T	4.5	578	157	E	C	70	2
80'	13	145/80R13	75	T	4	562	145	F	C	70	2
80'	12	155/80R12	77	T	4.5	553	157	E	C	70	2

# N-890



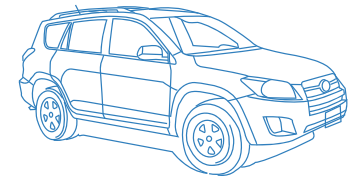
### Pattern Features



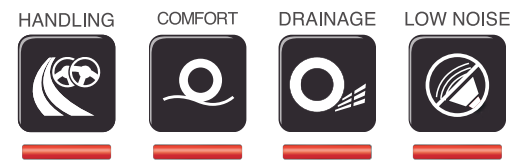
- 1 Highly strengthened center rib enhances driving stability.
- 2 Two broad circumferential grooves increase water drainage efficiency and stability.
- 3 The computer simulated 3-in-1 pitch pattern minimizes noise resonance.

Series	Inch	Size	Load Index	Speed Index	Rim Width(Inch)	OD (mm)	SW (mm)	RRC	Wet Grip	Noise Value (dB)	Noise Class
55'	17	275/55R17	109	V	8.5	734	284	E	B	75	3
60'	18	P285/60R18	116	H	8.5	799	292	E	B	75	3
60'	18	P265/60R18	110	H	8	775	272	E	B	75	3

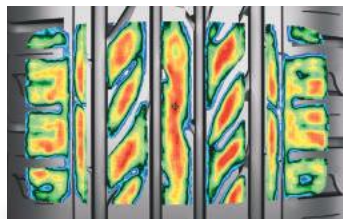




## SX-9 size list



### Contact Patch



1 Zigzag center rib design increases straight line handling.

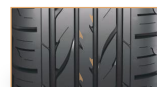


Figure 1

2 Four broad circumferential grooves with 35% void ratio enhance drainage efficiency and maneuverability under wet road condition. (Figure 1)



3 Broad circumferential grooves (outside groove wall angle > inside groove wall angle) drain water more easily, and prevent slipping. (Figure 2)

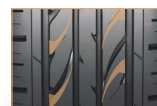


Figure 2

### Pattern Features



4 3-Dimension arc groove design between blocks helps increase stiffness, and also disturbs air flow in grooves.



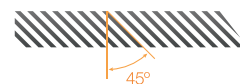
5 Sipes and thin grooves on blocks and shoulders balance block stiffness and riding comfort.

6 "Groove in groove" concept on circumferential grooves disperses stress on tire surface, and prevents irregular wear and noise caused by the friction between air flow and groove wall. (Figure 3)



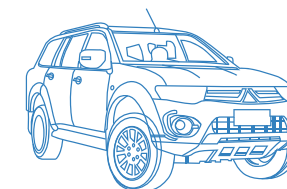
Figure 3

7 Separated circumferential grooves and radial grooves decrease rolling noise.



Series	Inch	Size	Load Index	Speed Index	Rim Width (Inch)	OD (mm)	SW (mm)	RRC	Wet Grip	Noise Value (dB)	Noise Class
35'	24	305/35R24	112(XL)	V	11	824	313	E	C	73	2
35'	22	265/35R22	102(XL)	V	9.5	745	271	E	C	73	2
35'	20	315/35ZR20	110(XL)	W	11	728	320	E	C	73	2
40'	22	305/40R22	114(XL)	V	11	803	313	E	C	73	2
40'	20	275/40ZR20	106(XL)	W	9.5	728	278	E	C	73	2
40'	20	275/40R20	106(XL)	V	9.5	728	278	E	C	73	2
45'	22	305/45R22	118(XL)	V	10	833	303	E	C	73	2
45'	20	295/45R20	114(XL)	H	10	774	296	E	C	73	2
45'	20	275/45R20	110(XL)	V	9	756	273	E	C	73	2
45'	19	285/45R19	111(XL)	V	9.5	739	285	E	C	73	2
50'	20	305/50R20	120(XL)	H	9.5	814	316	E	C	73	2
50'	20	285/50R20	116(XL)	V	9	794	297	E	C	73	2
50'	20	265/50R20	111(XL)	V	8.5	774	277	E	C	73	2
50'	20	245/50R20	102	V	7.5	754	253			N/A	
50'	19	255/50R19	107(XL)	V	8	739	265	E	C	73	2
55'	20	275/55R20	117(XL)	H	8.5	810	284	E	C	73	2
55'	19	275/55R19	111	V	8.5	785	284	E	C	72	2
55'	19	255/55R19	111(XL)	V	8	763	265	E	C	73	2
55'	19	245/55R19	107(XL)	H	7.5	753	253	E	C	72	2
55'	19	235/55ZR19	101	W	7.5	741	245	E	C	73	3
55'	19	225/55ZR19	99	Y	7	731	233	E	C	71	2
55'	18	255/55R18	109(XL)	V	8	737	265	E	C	73	2
55'	18	235/55R18	104(XL)	V	7.5	715	245	E	C	73	3
55'	18	215/55R18	99(XL)	V	7	693	226	E	C	71	2
55'	17	235/55R17	103(XL)	V	7.5	690	245	E	C	71	2
55'	17	235/55R17	103(XL)	H	7.5	690	245			N/A	
60'	19	255/60R19	109	H	7.5	789	260			N/A	
60'	18	245/60R18	105	H	7	751	248			N/A	
60'	18	235/60R18	107(XL)	V	7	739	240	E	C	71	2
60'	17	255/60R17	110(XL)	V	7.5	738	260	E	C	73	2
60'	17	225/60R17	99	H	6.5	702	228	E	C	73	3
60'	15	275/60R15	107	H	8	711	279	E	C	72	2
60'	15	255/60R15	102	H	7.5	687	260	E	C	72	2
65'	17	285/65R17	116	H	8.5	802	292			N/A	
65'	17	275/65R17	115	H	8	790	279	E	C	72	2
65'	17	265/65R17	112	H	8	776	272	E	C	73	3
65'	17	255/65R17	110	H	7.5	764	260	E	C	73	3
65'	17	245/65R17	111(XL)	H	7	750	248	E	C	73	3
65'	17	235/65R17	108(XL)	V	7	738	240	E	C	73	3
65'	17	225/65R17	102	V	6.5	724	228	E	C	71	2
65'	16	235/65R16	107(XL)	V	7	712	240	E	C	71	2
65'	16	215/65R16	102(XL)	H	6.5	686	221	E	C	73	3
70'	18	255/70R18	113	H	7.5	815	260	E	C	72	2
70'	17	265/70R17	115	H	8	804	272	E	C	73	3
70'	16	275/70R16	114	H	8	792	279	E	C	73	3
70'	16	265/70R16	112	S	8	778	272	E	C	73	3


# SX-8




## SX-8 size list




1 Broad contact patch generates excellent grip and easily conquers various off-road conditions. Reinforced shoulder block stiffness improves tire cornering and handling ability substantially.

2  Zig-zag main grooves with multi-direction groove design give driving ability at various angles and also offer motorists trustworthiness of safety.

3  Concave-shaped shoulder design delivers better off-road traction and control.

4  Optimized tread groove tapers promote self-cleaning properties for all-terrain traction.

5  Block-connecting bars reinforce stiffness, improve off-road maneuverability and lower the noise caused by block deformation.

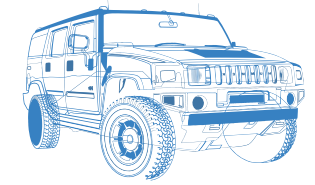
6 Unique wear-resistant compound extends tread life.

Pattern Features



Series	Inch	Size	Load Index	Speed Index	Rim Width (Inch)	OD (mm)	SW (mm)	RRC	Wet Grip	Noise Value (dB)	Noise Class
50'	15	P295/50R15	108(OV)	S	9.5	677	309		N/A		
60'	16	275/60R16	109(OV)	S	8	736	279		N/A		
65'	17	285/65R17	116(OV)	S	8.5	802	292		N/A		
65'	17	275/65R17	115(OV)	S	8	790	279		N/A		
65'	17	265/65R17	112	T	8	776	272		N/A		
65'	16	255/65R16	110(OV)	S	7.5	738	260		N/A		
70'	16	265/70R16	112	S	8	778	272		N/A		
70'	16	255/70R16	111(OV)	S	7.5	764	260		N/A		
70'	16	245/70R16	111(OV)	S	7	750	248		N/A		
70'	16	235/70R16	106(OV)	T	7	736	240		N/A		
70'	16	225/70R16	103(OV)	T	6.5	722	228		N/A		
70'	16	215/70R16	100(OV)	T	6.5	708	221		N/A		
70'	15	265/70R15	112(OV)	S	8	753	272		N/A		
70'	15	205/70R15	96(OV)	T	6	669	209		N/A		
75'	15	235/75R15	105(OV)	S	6.5	733	235		N/A		
80'	15	215/80R15	102(OV)	S	6	725	216		N/A		
4WD	16	LT265/75R16	123/120(OV)	R	7.5	804	267		N/A		
4WD	16	LT245/75R16	120/116(OV)	R	7	774	248		N/A		
4WD	15	LT215/75R15	100/97(OV)	S	6	703	216		N/A		

# SX-7





## SX-7 size list





### Pattern Features





- 

1 Three Zigzag main grooves for improved braking force.
- 

2 Interval notches along tire shoulders design to improve driving force.
- 

3 Wide lateral grooves run through the tread for improved mud drainage ability effectively.
- 

4 Sipes on tire blocks for improved traction on muddy roads.
- 

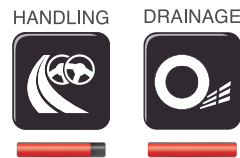
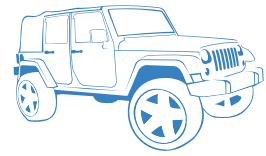
5 Bars at the bottom of grooves to prevent rocks from becoming embedded when driving on gravel roads.
- 

6 Special sidewall design for extra tire traction when driving in muddy terrain.

Series	Inch	Size	Load Index	Speed Index	Rim Width (Inch)	OD (mm)	SW (mm)	RRC	Wet Grip	Noise Value (dB)	Noise Class
4WD	16	LT265/75R16	123/120(OW)	Q	7.5	804	267			N/A	
4WD	16	LT265/70R16	117/114(OW)	Q	8	778	272			N/A	
4WD	16	LT245/75R16	120/116(OW)	N	7	774	248			N/A	
4WD	15	31*10.50R15LT	109(OW)	Q	8.5	775	268			N/A	



# S-860



### Pattern Features

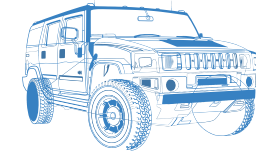


- 1 Four zigzag circumferential grooves increase traction under all kinds of road conditions.
- 2 Irregular pattern blocks promote good traction on rugged surface.
- 3 Blocks with kerfs provide excellent grip.

### S-860 size list

Series	Inch	Size	Load Index	Speed Index	Rim Width (Inch)	OD (mm)	SW (mm)	RRC	Wet Grip	Noise Value (dB)	Noise Class
75"	15	P235/75R15	105(OV)	S	6.5	733	235			N/A	
80"	16	205/80R16	104	S	5.5	734	203			N/A	
4WD	16	LT235/85R16	120/116	Q	6.5	806	235	E	E	74	3
4WD	16	LT235/85R16	120/116(OV)	Q	6.5	806	235	E	E	74	3
4WD	15	LT235/75R15	104/101(OV)	S	6.5	733	235	F	C	74	3
4WD	15	31*10.50R15LT	109(OV)	S	8.5	775	268	F	C	74	3
4WD	15	30*9.50R15LT	104(OV)	S	7.5	750	240	F	C	74	3

# S-830



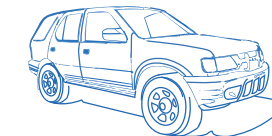
### Pattern Features



- 1 Multi-functional 4x4 tire is designed for all kinds of road conditions.
- 2 Meshed pattern design provides excellent traction on rugged roads.
- 3 Irregular kerf arrangement increases grip on rough roads.

Series	Inch	Size	Load Index	Speed Index	Rim Width (Inch)	OD (mm)	SW (mm)	RRC	Wet Grip	Noise Value (dB)	Noise Class
70"	16	265/70R16	112(OV)	S	8	778	272			N/A	
80"	16	205/80R16	104(OV)	S	5.5	734	203			N/A	
4WD	16	LT225/75R16	110/107(OV)	Q	6	744	223	F	C	77	3
4WD	15	LT235/75R15	104/101(OV)	S	6.5	733	235	F	C	77	3
4WD	15	31*10.50R15LT	109(OV)	S	8.5	775	268	F	C	77	3

# N-850



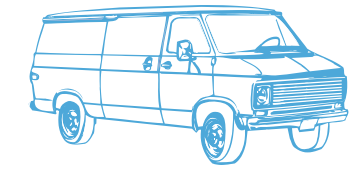
### Pattern Features



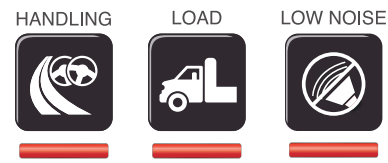
- 1 Four circumferential grooves enhance drainage efficiency greatly.
- 2 Well-proportioned kerf on tread block increases riding comfort.
- 3 Zigzag thin grooves on tread shoulders upgrade maneuverability on rugged roads.
- 4 Interlocking sub-grooves curb noise resonance.

Series	Inch	Size	Load Index	Speed Index	Rim Width (Inch)	OD (mm)	SW (mm)	RRC	Wet Grip	Noise Value (dB)	Noise Class
4WD	16	LT265/75R16	119/116(OV)	Q	7.5	804	267	F	B	75	3
4WD	16	LT245/75R16	114/111(OV)	Q	7	774	248	F	B	75	3
VAN	15	195/70R15C	104/102	S	6	655	201	F	B	75	3

# S-888



## S-888 size list



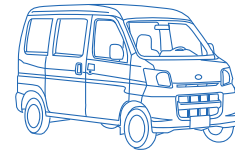
- 1 Three circumferential zigzag grooves promote excellent traction performance.
- 2 Upgraded tire shoulder stiffness avoids unusual tire wear and provides maneuverability when cornering.
- 3 Wear-resisting tread compound extends tire life.
- 4 Thin grooves at the bottom of shoulder grooves maintain tread softness at the intermediate and end wearing stage for continuous riding comfort.

Pattern Features

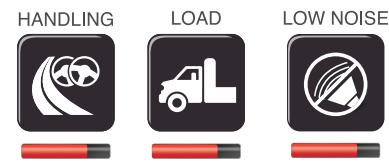
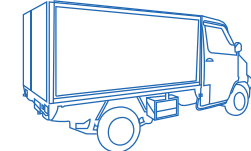


Series	Inch	Size	Load Index	Speed Index	Rim Width (Inch)	OD (mm)	SW (mm)	RRC	Wet Grip	Noise Value (dB)	Noise Class
VAN	16	235/65R16C	115/113	R	7	712	240	F	C	72	2
VAN	16	215/75R16C	116/114	S	6	728	216	C	E	72	2
VAN	16	215/65R16C	109/107	T	6.5	686	221	F	C	72	2
VAN	16	215/60R16C	108/106	T	6.5	664	221	F	C	72	2
VAN	16	205/75R16C	110/108	R	5.5	714	203	F	C	72	2
VAN	16	205/65R16C	107/105	T	6	672	209	F	C	72	2
VAN	16	195/75R16C	107/105	R	5.5	698	196	F	C	72	2
VAN	16	185/75R16C	104/102	R	5	684	184	F	C	72	2
VAN	15	225/70R15C	112/110	S	6.5	697	228	F	C	72	2
VAN	15	215/65R15C	104/102	T	6.5	661	221	F	C	72	2
VAN	15	205/70R15C	106/104	S	6	669	209	F	C	72	2
VAN	15	195R15C	106/104	R	5.5	690	198	F	C	72	2
VAN	15	195/70R15C	104/102	S	6	655	201	F	C	72	2
VAN	14	205/75R14C	109/107(WR)	R	5.5	664	203	F	C	72	2
VAN	14	195R14C	106/104	S	5.5	666	198	F	C	72	2
VAN	14	185R14C	102/100	R	5.5	650	188	F	C	72	2
VAN	14	175R14C	99/98	R	5	634	178	F	C	72	2
VAN	14	165R14C	97/95	R	4.5	622	167	F	C	72	2
VAN	13	175R13C	97/95	N	5	608	178	F	C	72	2
VAN	13	165R13C	94/92	N	4.5	596	167	F	C	72	2
VAN	13	155R13C	90/88	R	4.5	578	157	F	C	72	2
VAN	12	155R12C	88/86	Q	4.5	550	157	F	C	72	2
VAN	12	145R12C	86/84	N	4	540	145	F	C	72	2

# N-820



# S-866



### Pattern Features



- 1 Three zigzag circumferential grooves provide superior grip under all kinds of road conditions.
- 2 Zigzag sub-grooves at tire shoulders increase contact on road surface to enhance manoeuvrability.
- 3 Zigzag kerf design upgrades traction and riding comfort.

### Pattern Features



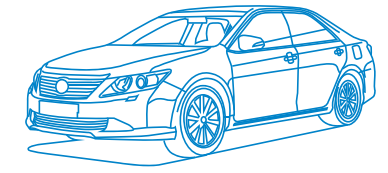
- 1 The arrangement of computer-simulated tread pitches reduce the generation of noise.
- 2 The enlarged sidewall horizontal ratio design ensures endurance, safety and smooth driving.
- 3 The deeper tread groove enhances great gripping ability and reduces the noise at the later stage of tire wearing.

Series	Inch	Size	Load Index	Speed Index	Rim Width (Inch)	OD (mm)	SW (mm)	RRC	Wet Grip	Noise Value (dB)	Noise Class
VAN	15	195R15C	106/104	R	5.5	690	198	E	C	72	2
VAN	14	195R14C	106/104	N	5.5	666	198	E	C	72	2
VAN	14	185R14C	102/100	R	5.5	650	188	E	C	72	2
VAN	14	175R14C	99/98	N	5	634	178	E	C	72	2
VAN	14	165R14C	97/95	N	4.5	622	167	E	C	72	2
VAN	13	175R13C	97/95	N	5	608	178	E	C	72	2
VAN	13	165R13C	94/92	N	4.5	596	167	E	C	72	2
VAN	13	155R13C	90/88	N	4.5	578	157	E	C	72	2
VAN	12	155R12C	88/86	Q	4.5	550	157	E	C	72	2
VAN	12	145R12C	86/84	N	4	544	145	E	C	72	2

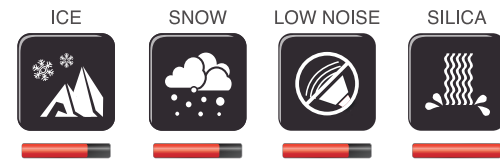
Series	Inch	Size	Load Index	Speed Index	Rim Width (Inch)	OD (mm)	SW (mm)	RRC	Wet Grip	Noise Value (dB)	Noise Class
LTR	16	7.50R16	122/120	L	6	802	213	F	B	68	1
LTR	16	7.00R16	117/116	N	5.5	777	197	E	C	71	2



# SA-700



## SA-700 size list



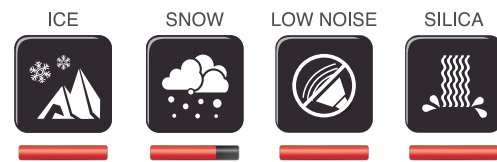
- 1 The central blocks with 3D kerf enhance maneuverability on snowy road.
- 2 Four circumferential- groove raises drainage efficiency and stability on wet road. Multi-itch arrangement reduces rolling noise effectively.
- 3 The large blocks on shoulders increase sustaining strength, escalate cornering stability and treadwearing.
- 4 No matter in summer or in winter, SA-700 all season tires provide drivers maneuverability and safety all year round.
- 5 Unique compound design strengthens gripping ability with longer usage.

Pattern Features



Series	Inch	Size	Load Index	Speed Index	Rim Width (Inch)	OD (mm)	SW (mm)	RRC	Wet Grip	Noise Value (dB)	Noise Class
50'	15	195/50R15	86(XL)	V	6.0	577	201	E	C	72	2
55'	16	205/55R16	94(XL)	V	6.5	632	214	E	C	72	2
55'	16	215/55R16	97(XL)	V	7.0	642	226	E	C	72	2
55'	17	225/55R17	101(XL)	V	7.0	680	233	E	C	72	2
55'	17	235/55R17	103(XL)	V	7.5	690	245	E	C	72	2
60'	14	185/60R14	82	H	5.5	578	189	E	C	70	2
60'	15	185/60R15	88(XL)	H	5.5	603	189	E	C	71	2
60'	16	215/60R16	99(XL)	V	6.5	664	221	E	C	72	2
60'	17	215/60R17	100(XL)	V	6.5	690	221	E	C	72	2
65'	14	175/65R14	82	H	5.0	584	177	E	C	70	2
65'	15	175/65R15	88(XL)	H	5.0	609	177	E	C	71	2
65'	15	195/65R15	95(XL)	V	6.0	635	201	E	C	72	2
65'	15	215/65R15	100(XL)	H	6.5	661	221	E	C	72	2
65'	16	215/65R16	102(XL)	V	6.5	686	221	E	C	72	2
70'	14	165/70R14	81	H	5.0	588	170	E	C	70	2
70'	15	205/70R15	96	H	6.0	669	209	E	C	71	2

# PF-3D



- 1 Four circumferential grooves upgrade drainage performance on icy/snowy roads.
- 2 Center blocks in interlaced allocation reinforce driving stability on icy/snowy roads.
- 3 When driving on the roads with accumulated snow, two thin circumferential grooves increase more friction and strengthen driving performance on snowy roads.
- 4 3D Zigzag sipes upgrade stiffness of tread blocks and further reinforce driving stability on icy/snowy roads.
- 5 Tread compound with unique silica formula preserves softness of tread block and further tone up icy grip.

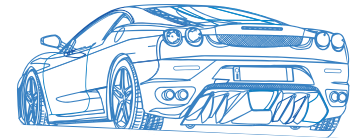
### Pattern Features



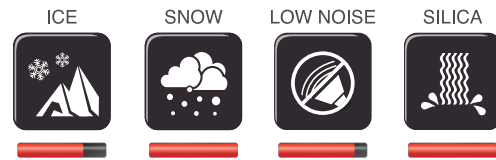
## PF-3D size list



Series	Inch	Size	Load Index	Speed Index	Rim Width (Inch)	OD (mm)	SW (mm)	RRC	Wet Grip	Noise Value (dB)	Noise Class
40'	20	275/40R20	106(XL)	Q	9.5	728	278			N/A	
40'	18	225/40R18	92(XL)	Q	8	637	230			N/A	
45'	18	245/45R18	96	Q	8	677	243	E	F	72	2
45'	17	235/45R17	94	Q	8	644	236	E	F	72	2
45'	17	225/45R17	94(XL)	Q	7.5	634	225			N/A	
50'	19	255/50R19	107(XL)	Q	8	739	265	E	F	72	2
50'	17	225/50R17	98(XL)	Q	7	658	233	E	F	72	2
55'	18	255/55R18	109(XL)	Q	8	737	265	E	F	72	2
55'	18	235/55R18	100	Q	7.5	715	245	E	F	72	2
55'	17	225/55R17	101(XL)	Q	7	680	233	E	F	72	2
55'	16	225/55R16	99(XL)	Q	7	654	233	E	F	72	2
55'	16	215/55R16	93	Q	7	642	226	E	F	72	2
55'	16	205/55R16	91	Q	6.5	632	214	E	F	72	2
60'	18	235/60R18	107(XL)	Q	7	739	240	E	F	72	2
60'	17	225/60R17	103(XL)	Q	6.5	702	228			N/A	
60'	16	205/60R16	96(XL)	Q	6	652	209			N/A	
65'	16	215/65R16	98	Q	6.5	686	221	E	F	72	2
65'	15	195/65R15	95(XL)	Q	6	635	201			N/A	
65'	15	185/65R15	92(XL)	Q	5.5	621	189			N/A	
65'	14	175/65R14	82	Q	5	584	177			N/A	
70'	19	155/70R19	84	Q	4.5	701	157			N/A	



## PF-2 size list



- 1 Center rib and directional pattern enhance straight driving performance and maneuverability on snowy roads.
- 2 Directional zigzag sipes and arrow-shaped grooves upgrade braking and drainage performance on snowy and wet roads.
- 3 32% void ratio increases contact patch to reinforce friction, shorten braking distance on dry/wet roads and enhance icy grip.
- 4 3D solid sipes design on the tread shoulders enhances block stiffness and upgrades handling & cornering ability on icy roads.
- 5 Zigzag grooves upgrade icy traction and braking performance.
- 6 A new-generation all season tire with unique compound enhances tread stiffness and friction to shorten braking distance on dry/wet roads, and also strengthens snowy grip.
- 7 Unique silica formula used for all sizes enhances wet grip.

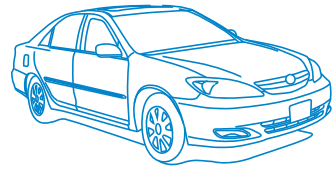
### Pattern Features



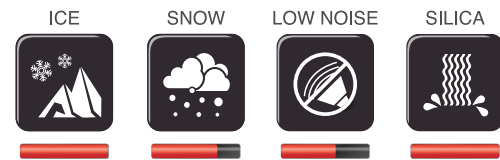
Series	Inch	Size	Load Index	Speed Index	Rim Width (Inch)	OD (mm)	SW (mm)	RRC	Wet Grip	Noise Value (dB)	Noise Class
40'	18	225/40R18	92(XL)	V	8	637	230	E	C	72	2
45'	17	235/45R17	97(XL)	V	8	644	236	E	C	72	2
45'	17	225/45R17	94(XL)	H	7.5	634	225	E	C	71	2
45'	17	215/45R17	91(XL)	V	7	626	213	E	C	71	2
50'	17	225/50R17	98(XL)	V	7	658	233	E	C	71	2
50'	17	205/50R17	93(XL)	V	6.5	638	214	E	C	71	2
50'	15	195/50R15	86(XL)	H	6	577	201	E	C	71	2
55'	17	225/55R17	101(XL)	H	7	680	233	E	C	71	2
55'	16	225/55R16	99(XL)	V	7	654	233	E	C	71	2
55'	16	215/55R16	97(XL)	H	7	642	226	E	C	71	2
55'	16	205/55R16	94(XL)	H	6.5	632	214	E	C	71	2
55'	16	195/55R16	91(XL)	H	6	620	201	E	C	71	2
55'	15	195/55R15	89(XL)	H	6	595	201	E	C	71	2
55'	15	185/55R15	86(XL)	H	6	585	194	E	C	71	2
60'	17	215/60R17	100(XL)	V	6.5	690	221	E	C	71	2
60'	16	205/60R16	96(XL)	H	6	652	209	E	C	71	2
60'	15	195/60R15	92(XL)	H	6	615	201	E	C	71	2
60'	15	185/60R15	88(XL)	H	5.5	603	189	E	C	71	2
60'	14	165/60R14	79(XL)	H	5	554	170	E	C	71	2
65'	16	215/65R16	102(XL)	H	6.5	686	221	E	C	71	2
65'	15	205/65R15	99(XL)	H	6	647	209	E	C	71	2
65'	15	195/65R15	95(XL)	H	6	635	201	E	C	71	2
65'	15	185/65R15	92(XL)	H	5.5	621	189	E	C	71	2
65'	15	175/65R15	88(XL)	H	5	609	177	E	C	71	2
65'	14	185/65R14	90(XL)	H	5.5	596	189	E	C	71	2
65'	14	175/65R14	86(XL)	H	5	584	177	E	C	71	2
70'	14	165/70R14	85(XL)	H	5	588	170	E	C	71	2



# PF-5



■ Studdable



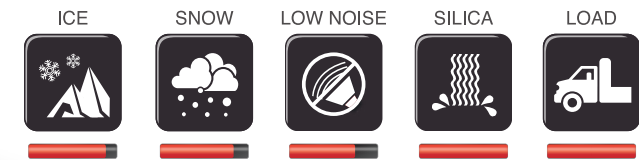
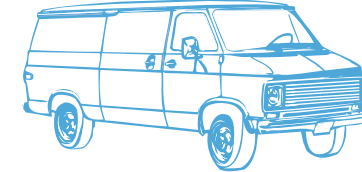
### Pattern Features



- 1 Multi-circumferential zigzag grooves promote excellent traction performance.
- 2 Upgraded tire shoulder stiffness avoids unusual tire wear.
- 3 Wear-resisting tread compound extends tire life.
- 4 Thin grooves at the bottom of shoulder grooves maintain tread softness at the intermediate and final wearing stage for continual riding comfort.

Series	Inch	Size	Load Index	Speed Index	Rim Width (Inch)	OD (mm)	SW (mm)	RRC	Wet Grip	Noise Value (dB)	Noise Class
45'	17	225/45R17	94(XL)	H	7.5	634	225	E	E	74	3
55'	16	225/55R16	95	T	7	654	233	E	E	74	3
55'	16	215/55R16	97(XL)	T	7	642	226	E	E	74	3
55'	16	205/55R16	94(XL)	T	6.5	632	214	E	E	74	3
60'	16	205/60R16	96(XL)	H	6	652	209	E	E	74	3
65'	17	265/65R17	116(XL)	T	8	776	272	E	E	77	3
65'	17	235/65R17	104	T	7	738	240	E	E	74	3
65'	16	215/65R16	98	T	6.5	686	221	E	E	74	3
65'	15	215/65R15	100(XL)	H	6.5	661	221	E	E	74	3
65'	15	205/65R15	99(XL)	T	6	647	209	E	E	74	3
65'	15	195/65R15	95(XL)	T	6	635	201	E	E	74	3
65'	15	185/65R15	88	T	5.5	621	189	E	E	74	3
65'	14	185/65R14	86	T	5.5	596	189	E	E	74	3
65'	14	175/65R14	82	T	5	584	177	E	E	74	3
70'	16	215/70R16	100	H	6.5	708	221	E	E	74	3
70'	15	205/70R15	96	T	6	669	209	E	E	74	3

# P-800



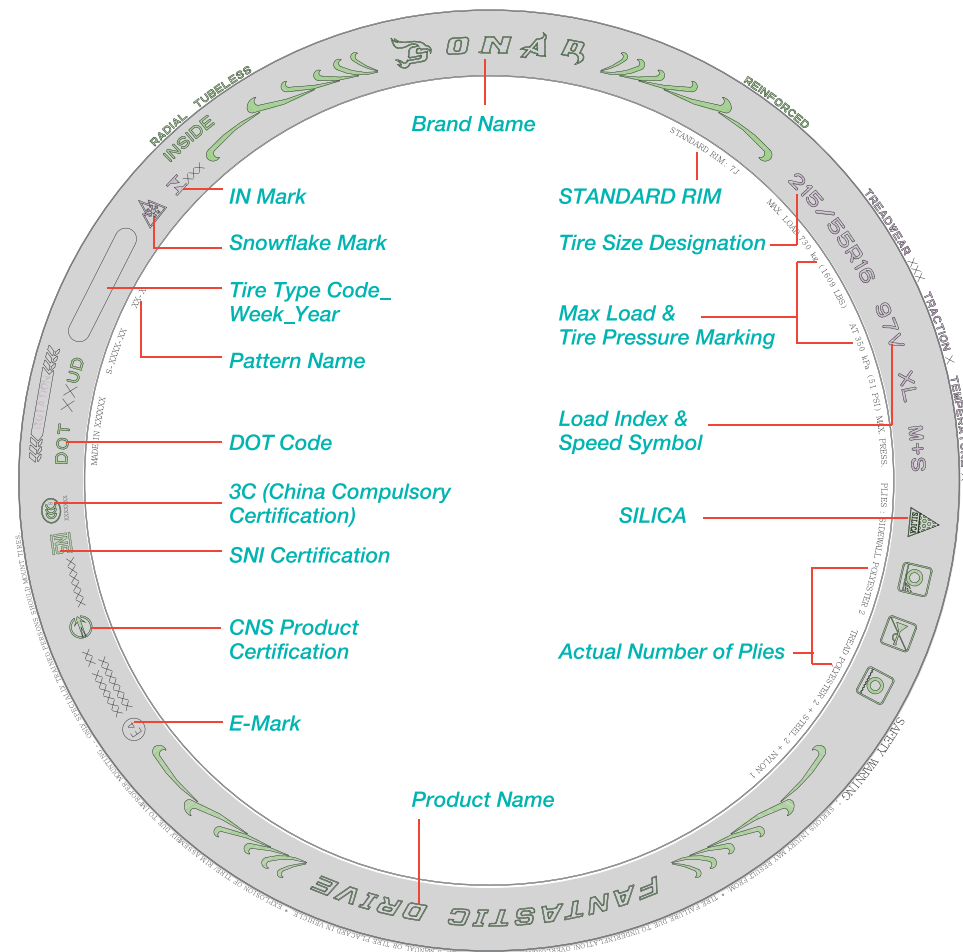
### Pattern Features



- 1 Three circumferential zigzag grooves promote ice traction and drainage performance.
- 2 Siphon-type sipe at the center enhances drainage efficiency.
- 3 Zigzag sipes on the tread shoulders upgrade maneuverability on icy roads.

Series	Inch	Size	Load Index	Speed Index	Rim Width (Inch)	OD (mm)	SW (mm)	RRC	Wet Grip	Noise Value (dB)	Noise Class
VAN	15	195/70R15C	104/102	N	6	655	201	F	E	73	2
VAN	15	195/70R15C	104/102	R	6	655	201	F	E	73	2
VAN	14	195R14C	106/104	N	5.5	666	198	F	E	73	2
VAN	14	185R14C	102/100	N	5.5	650	188	F	E	73	2

# Tire Sidewall Marking Descriptions



## United States Department of Transportation (DOT) Safety Standards

United States Department of Transportation regulation "Federal Motor Vehicle Safety Standards," tires must be marked as follows: Manufactured Date.

### Tire Marked with DOT Indicates

- Registered with U.S. DOT
- Passed certification of U.S. DOT regulated safety standards testing

### Tire Pressure Marking

MAX LOAD( ) LBSat ( )PSI MAX. PRESSURE

(Example) When inflation pressure is 36PSI (max), the maximum load is 1135 LBS

Note: The maximum tire load and inflation pressure for a cold tire.

Note: During normal use, please follow the marked inflation pressure on the tire.

Do not exceed the maximum pressure.

### Actual Number of Plies

PLIES: SIDEWALL POLYESTER X

TREAD POLYESTER X+STEEL X+NYLON X



# Safety

## Choosing A Tire and Replacement

Follow the original vehicle manufacturer OE rim specifications and discuss with a professional tire shop before making a replacement.

All tires used must be of identical specifications and tread pattern.

Do not mix different models, structures, or sizes of tires for avoiding accidents.

Tires are marked with a direction on the sidewall and are to be installed in that direction.

## Correct Use and Daily Inspection

### Tire Pressure

Measure the tire pressure when the tire is cold and inflate to original specified pressure.

### Tread Wear Indicator

Minimum tread depth is limited to 1.6mm.

There are 6▲ on the circumference of the tire marked "remaining tread"

### Caution

Check the tire surface for cracks, pins, metal scraps, glass or anything that may puncture the tire. Also, check for pebbles stuck between the treads. If any of the above situations occur, please go to a professional tire shop for repair.

Do not use a tire with damage through which the underlying fabric or steel belt is visible, to prevent accidents

Mounting a tire to rim should be following the instruction of direction.

Tires should be rotated according to specifications.

If the tire crown is abnormally worn (damage), please go to a professional tire shop for replacement.

Avoid direct sunlight, rain, oil, and electric sparks in tire storage locations.

Tires are made of rubber and will deteriorate after a long period of use, and should be periodically inspected.

Nankang doesn't guarantee the tires whichever five years off from manufactured date. Tires should be

inspected regularly by tire shops. Tire over 5 years old must be replaced.

## Important Precautions for Drivers

Avoid grinding the sidewall against the curb and running over bumpy surfaces, to limit damage to the tires.

Avoid sharp cornering, quick stops, and rapid acceleration, to prevent accidents from happening.

Keep a safe driving distance and obey the speed limit.

When you feel vibration from the vehicle or steering wheel, inspect the tires or return them to the factory for a checkup.

# INCH UP FITMENTS

60 Series → 55,50,45,40,35 Series					
60 Series	55 Series	50 Series	45 Series	40 Series	35 Series
175/60R16	185/55R16 195/55R16 205/55R16	195/50R16 205/50R16 215/50R16 225/50R16	205/45R16 215/45R16 205/45R17 215/45R17	215/40R17 245/40R17	
195/60R16	205/55R16 215/55R16 225/55R16	215/50R16 225/50R16 245/50R16 205/50R17 215/50R17	245/45R16 225/45R17 235/45R17 245/45R17	245/40R17 255/40R17 235/40R18	255/35R18
205/60R16	225/55R16 215/55R17	225/50R16 245/50R16 225/50R17 235/50R17	245/45R16 235/45R17 245/45R17	255/40R17 245/40R18	
215/60R16	225/55R17	245/50R16 235/50R17 225/50R18	245/45R17 245/45R18	255/40R18	
225/60R16		245/50R16		285/35R19	
205/60R17	225/55R17 215/55R18 225/55R17 215/55R18	225/50R17 235/50R17	245/45R17 235/45R18 245/45R18	255/40R18 245/40R19	
215/60R17	225/55R18	235/50R17 235/50R18	245/45R18		285/35R19
225/60R17	235/55R18				285/35R19

55 Series → 50,45,40,35 Series					
55 Series	50 Series	45 Series	40 Series	35 Series	
165/55R14	165/50R15				
195/55R14	195/50R15 205/50R15				
165/55R15	195/50R15 165/50R16				
175/55R15	195/50R15 205/50R15	195/45R16			
185/55R15	195/50R15 205/50R15 215/50R15 195/50R16	205/45R16			
195/55R15	205/50R15 215/50R15 225/50R15 195/50R16 205/50R16	215/45R16			
205/55R15	215/50R15 225/50R15 205/50R16 215/50R16	245/45R16			
215/55R15	225/50R15 215/50R16 225/50R16	245/45R16	245/40R17		
185/55R16	195/50R16 205/50R16 215/50R16	205/45R16 215/45R16 205/45R17	215/40R17		
195/55R16	205/50R16 215/50R16 225/50R16 205/50R17	215/45R16 245/45R16 215/45R17	245/40R17		

55 Series → 50,45,40,35 Series				
55 Series	50 Series	45 Series	40 Series	35 Series
205/55R17	215/50R16 225/50R16 245/50R16 205/50R17 215/50R17	245/45R16 225/45R17 235/45R17	245/40R17 255/40R17 235/40R18	255/35R18
215/55R16	225/50R16 245/50R16 215/50R17 225/50R17	245/45R16 235/45R17 245/45R17	245/40R17 255/40R17 235/40R18 245/40R18	
225/55R16	245/50R16 225/50R17 235/50R17	245/45R16 245/45R17	255/40R17 255/40R18	
205/55R17	215/50R17 225/50R17 235/50R17	235/45R17 245/45R17 225/45R18 235/45R18	245/40R17 255/40R17 235/40R18 245/40R18 255/40R18	

55 Series → 50,45,40,35 Series				
55 Series	50 Series	45 Series	40 Series	35 Series
215/55R16	225/50R16 245/50R16 215/50R17 225/50R17	245/45R16 235/45R17 245/45R17	245/40R17 255/40R17 235/40R18 245/40R18	
225/55R16	245/50R16 225/50R17 235/50R17	245/45R16 245/45R17	255/40R17 255/40R18	
205/55R17	215/50R17 225/50R17 235/50R17	235/45R17 245/45R17 225/45R18 235/45R18	245/40R17 255/40R17 235/40R18 245/40R18 255/40R18	
215/55R17	225/50R17 235/50R17 225/50R18	235/45R17 245/45R17 235/45R18 245/45R18	255/40R17 245/40R18 255/40R18	
225/55R17	235/50R17 225/50R18 235/50R18	245/45R17 245/45R18	255/40R18	285/35R19
205/55R18	225/50R18 235/50R18	225/45R18 235/45R18 245/45R18	245/40R18 255/40R18 245/40R19	285/35R19
215/55R18	225/45R17 235/45R17 245/45R17	245/40R17 255/40R17 235/40R18	255/40R18 245/40R19	
225/55R18	235/50R18	245/45R19		285/35R19

55 Series → 45,40,35 Series			
50 Series	45 Series	40 Series	35 Series
195/50R15	205/45R16		
205/50R15	215/45R16		
215/50R15	245/45R16		
165/50R16	195/45R16		
195/50R16	215/45R16 205/45R17		
205/50R16	245/45R16 215/45R17		



55 Series → 45,40,35 Series			
50 Series	45 Series	40 Series	35 Series
255/35R18	245/45R16 225/45R17	245/40R17 255/40R17	255/35R18
225/50R16	245/45R16 235/45R17	255/40R17	
205/50R17	225/45R17 235/45R17 245/45R17	245/40R17 255/40R17 235/40R18	255/35R18
215/50R17	235/45R17 245/45R17 225/45R18	245/40R17 255/40R17 235/40R18 245/40R18	
225/50R17	245/45R17 235/45R18 245/45R18	255/40R17 255/40R18	
235/50R17	245/45R18		
225/50R18	245/45R18	255/40R18	285/35R19
235/50R18	245/45R19		285/35R19

45 Series → 40,35 Series		
45 Series	40 Series	35 Series
195/45R16	205/40R17	
205/45R16	215/40R17	
205/45R17	245/40R17 255/40R17 215/40R18	
215/45R17	245/40R17 255/40R17 225/40R18 235/40R18	255/35R18
225/45R17	245/40R17 255/40R17 235/40R18	255/35R18
235/45R17	255/40R17 245/40R18 255/40R18	

45 Series → 40,35 Series		
45 Series	40 Series	35 Series
245/45R17	255/40R18	
215/45R18	235/40R18 245/40R18 255/40R18 225/40R19	255/35R18 255/35R19
225/45R18	235/40R18 245/40R18 255/40R18	255/35R19
235/45R18	255/40R18 245/40R19	285/35R19
245/45R18		285/35R19
225/45R19	245/40R19	255/35R19 285/35R19
245/45R19		285/35R19

45 Series → 35 Series		
45 Series	40 Series	35 Series
245/45R17	255/40R18	
215/40R18	255/35R18	
225/40R18	255/35R18	
235/40R18	255/35R19	
225/40R19	255/35R19 285/35R19	
245/40R19	285/35R19	



Randall Street Monrovia, Liberia  
 Telephone: +231886745333  
 +231776500000  
 Email: info@autoking.co  
 Website: www.autoking.co